



September 23, 2011

Conception of the Forerunner and Baptist John

Dear in Parishioners and Friends,

Once again it is my privilege to write to you all, sharing with you the many blessings which the Lord has sent down upon our little mission of Christ the Savior in Delmarva!

As you know, since the founding of the mission in 2000, the community has been in search of property which could serve as suitable soil for the Lord's spiritual vineyard. Likewise, through the generosity and sacrificial offerings of you all, the parishioners and friends of Christ the Savior, we have been increasing our building fund to make this happen.

On August 17, 2011, the day after celebrating the patronal feast of the mission, we discovered and visited a property, which we are quickly discerning to be a divinely sent opportunity. It is a 15.1 acre, 4300 square foot, Mediterranean style home with 3-car insulated garage, located just off Routes 113 and 90, strategically positioned for locals as well as vacationers. We have enclosed an information sheet describing this remarkable property, which not a few have commented, "looks like a Greek monastery". Those who visited the property that first day were immediately filled a holy desire to discern if this might just be God's will for us.

Within a week after the first official visit of the parish to the property, the Lord sent down another extraordinary blessing. A very generous couple from the community, who together were the first to lay eyes upon the property, offered the mission a \$100,000 donation and a \$400,000 zero-interest loan with no penalties. In so doing, what we thought might be "too good to be true" was becoming, by God's grace, a very real possibility.

We are writing to you now both so share our joy and excitement as well as to invite you to:

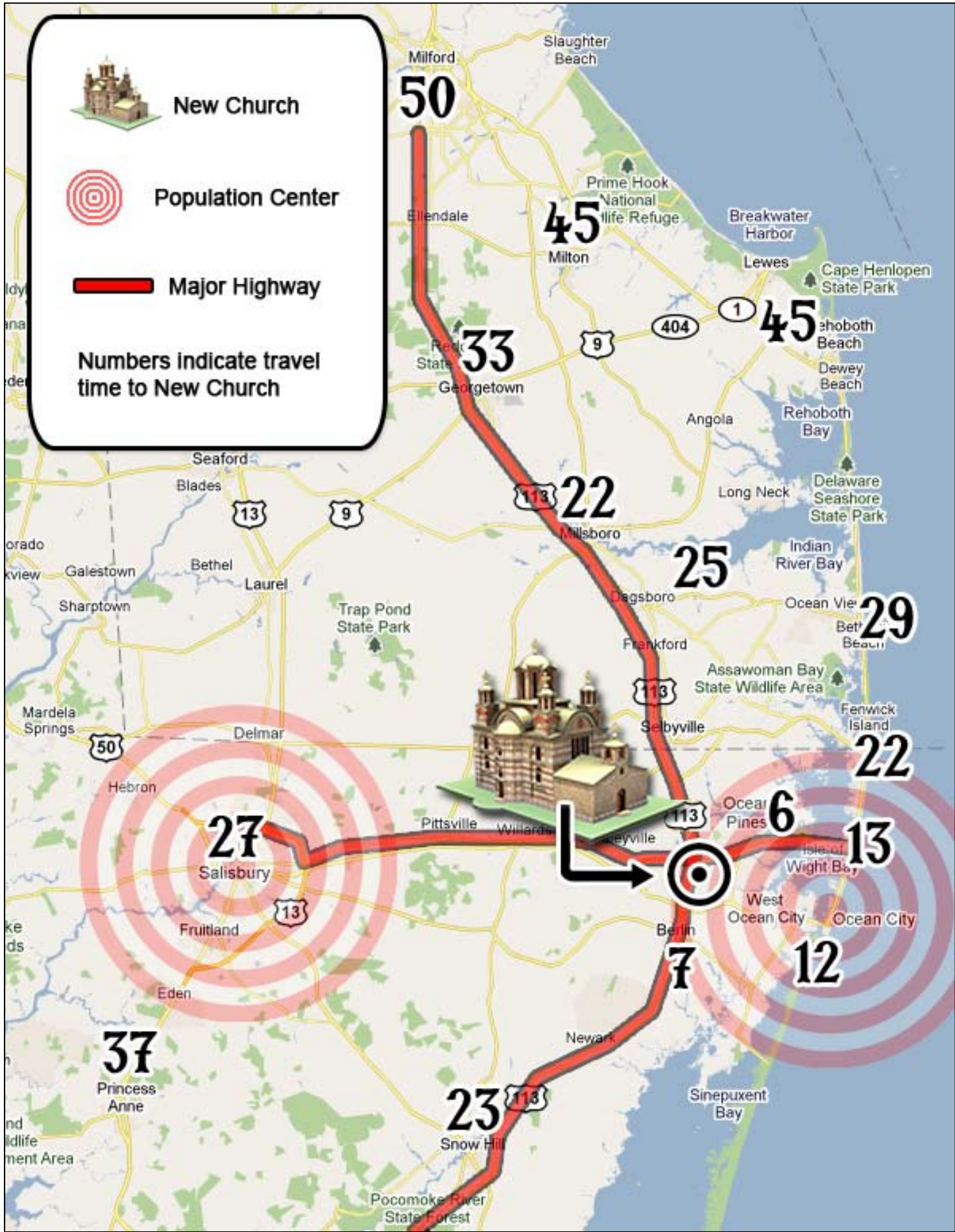
- 1) Visit the property with us on Sunday, October 2nd following the Divine Liturgy;
- 2) Attend a Special Parish Meeting on Sunday, October 9th, during which we will prayerfully discern the Lord's will for our future and then vote on the acquisition of this property.

If you are a fulltime or part-time member, or even a once a year visitor to Christ the Savior, we welcome you to come for these exciting and possibly historic events. Please be aware that only official members of the mission may take part in the vote. If you have questions about your status or are in need of a membership form, please let us know.

We ask that you look for future communications, keep an eye on our website, and/or give us a call with any questions that you might have. Most of all, we ask your prayers and continued support!

In Christ Jesus, Our Lord,

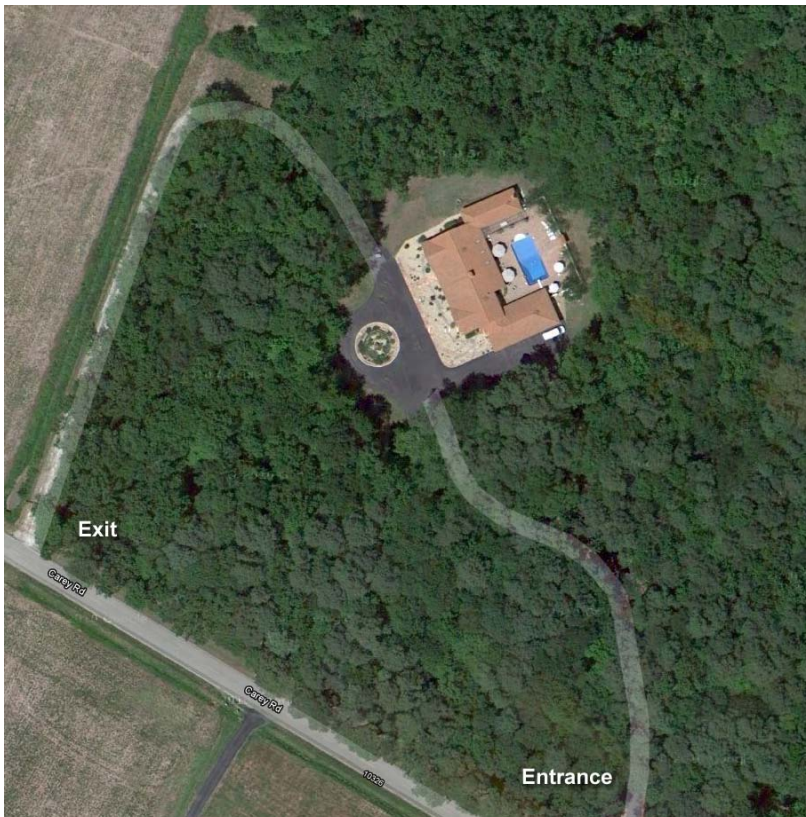

Fr. John Parsells



10315 Carey Road; Berlin, Maryland – MLS # 466680

This 15.1 acre, 4300 sqft Mediterranean style home looks like a Greek Monastery, minus the crosses, with an attached 3-car 1080 foot garage (chapel) and 216 foot workshop (vestibule). The home is currently divided into residential and commercial space, and would serve beautifully for our worship, fellowship, and rectory. The property lot has double entrances and already has 10-15 parking spaces. The lot is entirely wooded, with 3.5 acres cleared for the existing complex. The original home was built in 1989 and completely renovated and expanded in 2005.

In the future, the rectory could be moved offsite and the space could be used solely as a parish center with offices, classrooms, a dormitory for a youth camp, a place to house pilgrims for diocesan/parish retreats, etc.. We also envision building a true Orthodox temple in a style matching the home, a large hall, as well some other facilities. We see the acquisition of this property as stage one in the development of a larger center for Orthodoxy.



Financial Summary

Estimated Costs

- \$550K – property acquisition
- \$10K – land planning / evaluation
- \$20K – site work – parking, signs, etc.
- \$30K – structure improvements – chapel.
- \$610K – TOTAL

Funding

- 400K, zero-interest loan
- 100K, special donation
- 80K, building fund
- 580K – TOTAL funds currently available.
- Need to raise 0K to acquire property
- Need to raise 30K to move to the property.

Loan Repayment

- \$2200 per month / \$26,400 per year / 15.15 years to repay.
- Repayment would start when we move to the property, 2-6 months estimated.

How You Can Help

- 1) **Come and See** – Visit the property on Sunday, Oct. 2nd.
- 2) **Attend the Special Parish Meeting** – Sunday, Oct. 9th.
- 3) **Spread the Word** – Tell your family and friends.
- 4) **Make a Donation** – We will need to raise some more funds (probably about 30K).
- 5) **Offer Services** – We will need help making renovations to the property. If you are willing to donate time, expertise, or materials, please let us know.
- 6) **Pray With Us** – Ask the Lord to strengthen, help, and direct us according to His divine will.

